

CHARITIES HR NETWORK

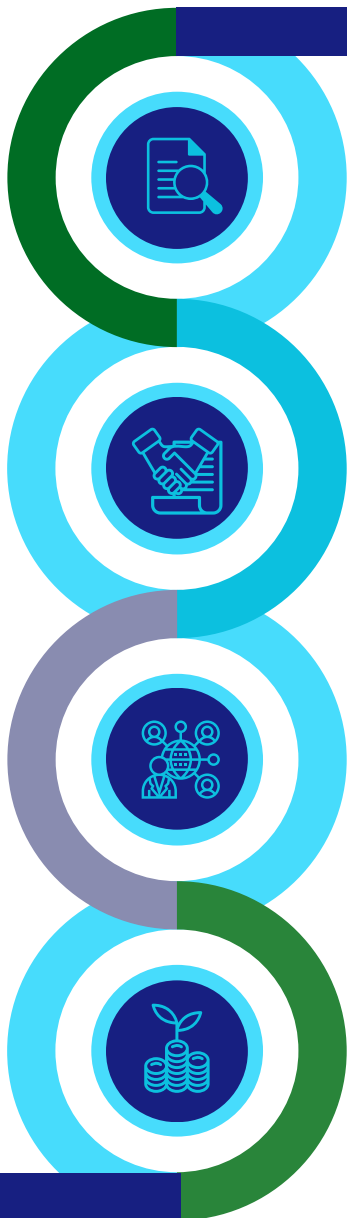
CHRN

THE GO-TO NETWORK FOR HR PROFESSIONALS IN THE NOT-FOR-PROFIT SECTOR.

For over 20 years, CHRN has been connecting and supporting HR professionals working in the sector. Registered charity No: 1193540.

We enable our members to create transformative HR solutions and linking organisational strategy to people, culture, talent and learning.

Membership is open to any registered charity in England and Wales that has at least one HR professional providing a strategic input for their organisation.



Benefits of membership

Your charity will have access to a wide range of content, resources and exclusive commercial discounts. We understand the strategic and operational challenges you face and aim to meet your needs, with events, guidance and special interest groups relevant to a range of HR roles.

Build Network Relationships

We directly connect you with your peers through our extensive range of meetings, online tools and annual conference. Whether you are an HR generalist, a recruiter, a learning and development, diversity or reward specialist – or all of the above, there's a community to help support your work.

Our Commercial Partners

We have an amazing range of engaged commercial partners who add their thought leadership and insight to our work. We have the only sector based partnership with the CIPD, who support our work through speakers, content and heavily discounted access to a range of their learning content.

Take a look at our [Commercial Partners](#) on the CHRN website.

The value of membership

The cost of membership, which is based on the size of the charity, is less than the cost of most open training course days, and so represents exceptional value for money. All our activities/events are available to members only and generally free to attend.

As HR professionals ourselves we know that the most important, but often hardest question to answer, is - what are other HR leaders doing on this issue? CHRN will help you answer that question and so much more.

For more information and to enquire about membership visit our website:

<https://www.chrn.org.uk/> or email: coordinator@chnr.org.uk